



LIME WOOD CLOSE, CHESTER, CHESHIRE

£1,950 PCM

- UNFURNISHED
- AVAILABLE IMMEDIATELY
- MODERN EXECUTIVE DETACHED HOUSE
- SPREAD OVER THREE FLOORS
- FIVE DOUBLE BEDROOMS
- FITTED KITCHEN WITH APPLIANCES

DWELL

LIME WOOD CLOSE, CHESTER, CHESHIRE

5
BED

4
BATH

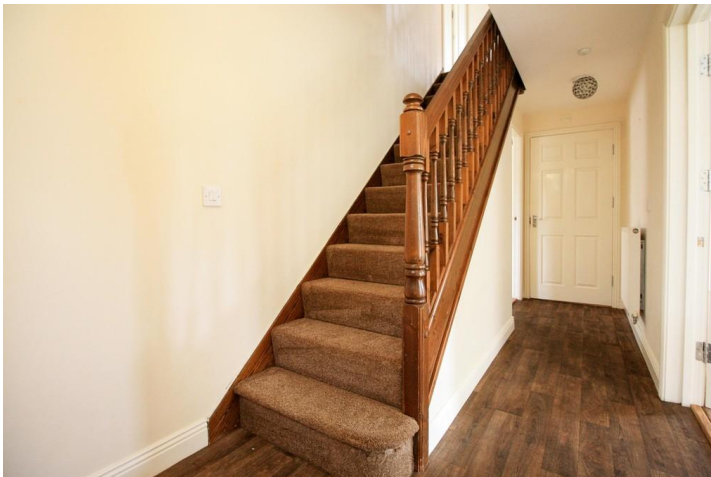
2
RECEPTION

FULL DESCRIPTION Urban Sale and Let are delighted to be offering this modern, five-bedroom executive home, conveniently situated for the city centre and local rail link.

The property is offered unfurnished and is available immediately. The beautiful accommodation, arranged over three floors, comprises hallway, wc/cloaks, family living room, fitted kitchen with integrated appliances and a dining area and study to the ground floor. To the first floor there are three double bedrooms (two with en-suite facilities) and a family bathroom and to the upper floor, two further, good-sized bedrooms (one with en-suite facilities).

Externally there is driveway parking, garage and private walled gardens. Sorry, no smokers. Pets are considered. EPC rating C & council tax band F.

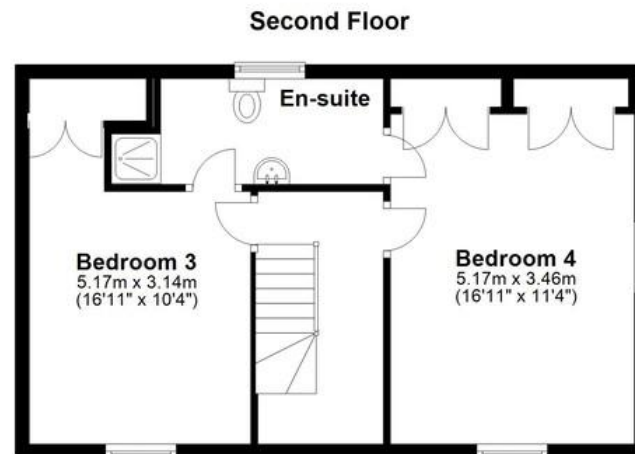
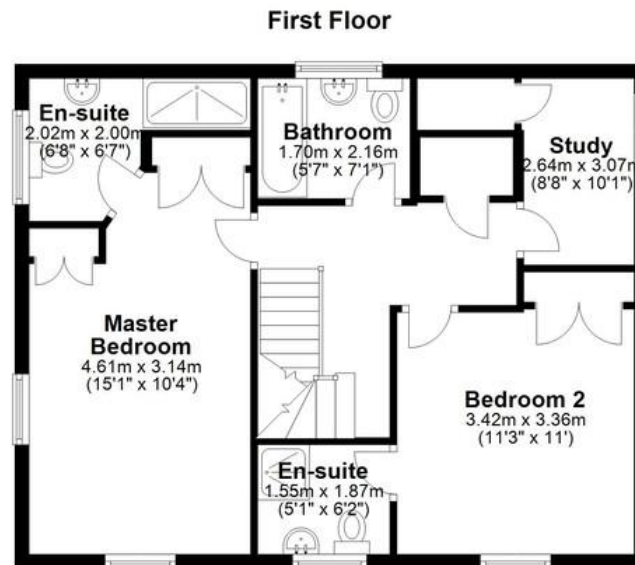
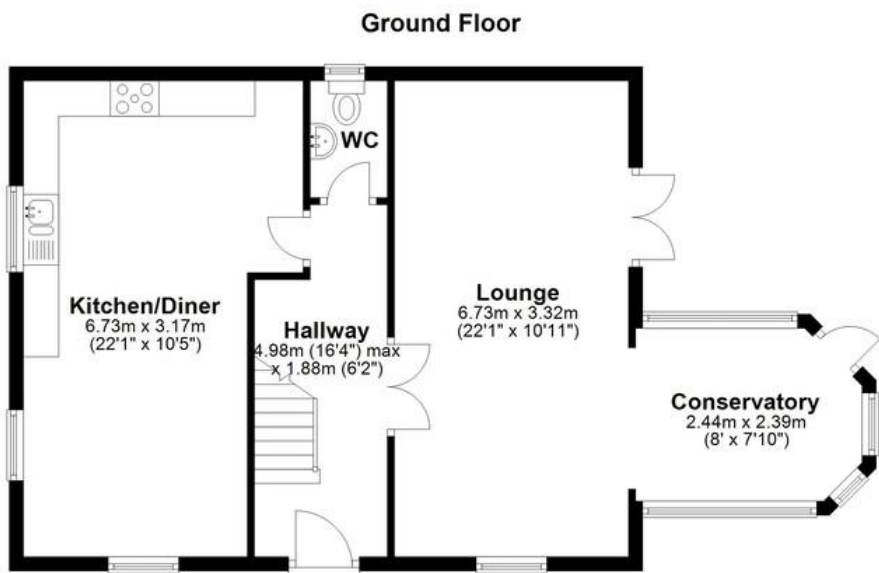




DWELL
Need to sell first?
Book a free valuation
01244 886 636







TOTAL FLOOR AREA /

Details are provided for guidance only. Measurements are approximate and should be independently verified.

COUNCIL TAX

Band F

AVAILABLE FROM

Available Now

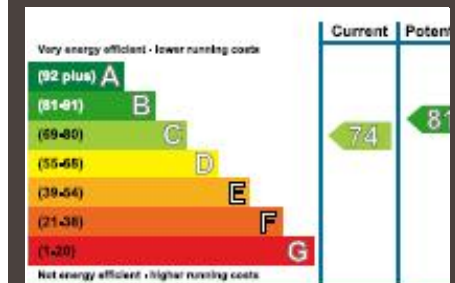
DEPOSIT

£2,019.23

FURNISH

Unfurnished

EPC



OFFICE CONTACT INFO

Dwell
19 Charles Street
Hoole
Chester
Cheshire
CH2 3AY

01244 886 636
info@dwellstateagents.co.uk
dwellstateagents.co.uk

2 Lime Wood Close